

夢の休日 *Dream Holiday*

ROYAL ROAD
GINZA

JTB

Perfect moments, always

CRUISE TRAIN SEVEN STARS IN KYUSHU

Jan. 30(Fri) ~Feb. 1(Sun), 2026(3 Days 2 Nights)

A special chartered tour by JTB Royal Road Ginza

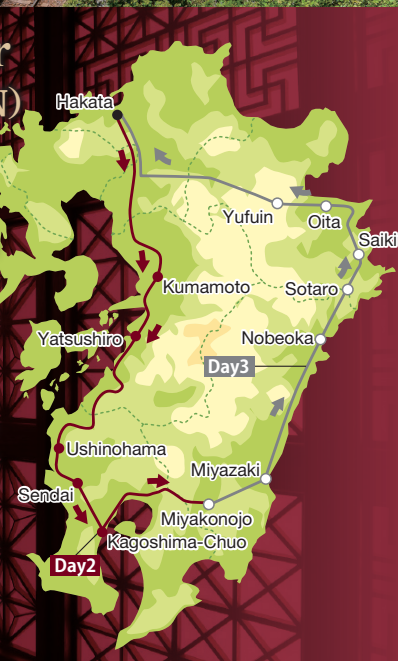


Kyushu Tour journey(3D2N)

※one night stay
on the train

Experience the elegant Seven Stars by viewing the ever-changing nature of Kyushu from the train window

This is two days journey around Kyushu and you can experience richness of spending time on the Seven Stars. This journey brings you relaxing moments in the changing scenery through the train windows. The sunset over the East China Sea from the Hisatsu Orange Railway will be a memorable. Communicating with local people in small coastal towns, the west and east of Kyushu, will surely warm your heart.



*A luxurious train where you can get a
feeling of Kyushu*

Upon departing from Hakata station, the Seven Stars heads for Kagoshima, the southern Kyushu area. A relaxing time will be spent viewing the scenery of the glittering azure-colored sea from the train windows and there are other things to enjoy prepared on the train. Enjoy a day filled with the history of Kyushu and the Seven Stars through the stories of Okawa Kumiko craftsmen, who decorated the interior of the Seven Stars.



*Delight in the seasonal treasures cultivated
on the island of Kyushu that will enhance
your meals over 2 days and 1 night*



*Please be aware that the itinerary is subject to change.*Please note that restaurant facilities and types of cuisine are subject to change.

KYUSHU RAILWAY COMPANY

A Journey to Discover the Beauty of Kyushu

We will give you the ultimate train journey, one which you have never experienced before, while you connect with the brilliance of each of the seven prefectures in Kyushu and the smiles and warmth of the people living here. You are sure to discover a new way of living from the scenery and conversations with people you can only encounter here. A fresh and meaningful once-in-a-lifetime story unique to Kyushu awaits you each time you visit. Seven Stars departs carrying your dreams.

The train

The gold Seven Stars emblem stands out against the royal wine red of the train cars.

The glaze and depth of the tone, which is also described as the color of ancient lacquer, represents the elegance of the journey and is a magnificent sight to behold. The panoramic windows of the first and seventh cars are also a signature feature of this exclusive train.



Movie



Details



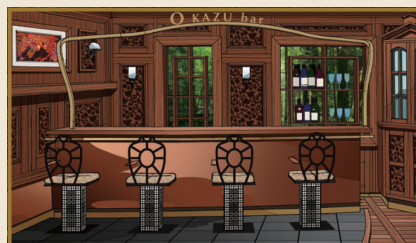
Lounge car "Blue Moon" [Car1]

The Lounge Car "Blue Moon" is a saloon on wheels, where you can wind down during the day. At night, sip drinks at the bar and mingle with fellow passengers in the modern Japanese atmosphere as the pleasant sound of the live piano performance tinkles in the background. Enjoy the starry sky that peers in from the panoramic windows with a glass of bliss in your hand and relax on the sofas to take in the stunning views that pass by. This space provides the perfect setting for social gatherings as well as solo time.



Tea room [Car2]

Passengers can enjoy the tea made by the crew in a space that has the scent of traditional Japanese culture.



BAR [Car3]

A bar that can be enjoyed as a hideaway in the limited space of the train. (There is an extra charge.)



Gallery shop [Car3]

A shop like an art museum, with a selection of excellent articles related to Kyushu.



Salon car "Jupiter" [Car2]

The salon car Jupiter is a place for passengers to meet and talk, and can also be used as a place for onboard activities. Complimentary drinks area also available.

Specialty meals

Lunch on the 1st day of the trip



Yamanaka (sushi)

A renowned "Hakata-mae" sushi restaurant frequented by food connoisseurs from all over Japan. Onboard the "Seven Stars in Kyushu," we offer seafood from the nearby seas, including the Genkai Sea, as well as freshly made sushi prepared by our highly trained chefs.

Dinner on the 1st day of the trip

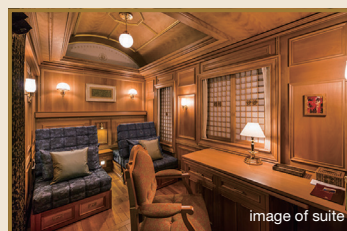


Belle France (French cuisine)

Exquisite French cuisine prepared by husband-and-wife team of chefs from Kagoshima. The charm of Kagoshima and Kyushu ingredients is expressed in each dish.

Guest Room

A Luxurious, Relaxing Space Under the Sun and Starry Skies



Suites 8Rooms

Special Suites that Combine Beauty and Function

Four cars are separated into 3 Suite Rooms each, where guests will experience quality rest and the finest hospitality. Each room is equipped with

a shower, toilet, and air conditioning. Special functions unique to this train will provide you with satisfying sleep. **Approx. 10m² : 8 rooms**



DX Suites A/B 1Room each

Premier Comforts that Befit a Special You

Only 2 exclusive Deluxe Suites are available on this train. Furnished according to different designs, they share the same keyword: comfort. Various pieces of

Japanese-style furniture are placed throughout the spacious and elegant space. The room at the end of the last car boasts a wall-to-wall window, through which you can enjoy the passing landscape.

[DX Suite A] Approx. 21m² : 1room/end of the last car*

[DX Suite B] Approx. 17m² : 1room/middle of the last car

*Depending on the direction in which the train is moving, the engine car may block the view on certain legs of the journey.

3 days on the "Seven Stars in Kyushu" and a special viewing of "Munakata Shrine," a World Heritage Site, led by a Shinto priest

Travel period / January 30 (Fri) to February 1 (Sun), 2026

Departure/arrival point:
Fukuoka

DATE (2026)	SCHEDULE (Overview)
(Additional arrangements)	Departing from Tokyo Haneda Airport (8:30-10:00) → (Class J) → Fukuoka Airport
Day 1	Fukuoka Airport (Meet at 11:15 / Depart at 11:30) Hakata Station (Meet at 11:50 / Depart at 12:00) 🚗 French cuisine lunch ① 🚗 Formal visit to the shrine by priests of Munakata Shrine and viewing of national treasures 🚗 Hotel check-in Enjoy a Kaiseki dinner at the hotel. ① Overnight stay at The Ritz-Carlton, Fukuoka Meals <input type="checkbox"/> L <input type="checkbox"/> D
Day 2	Hotel ... 🚗 ... Hakata Station Welcome ceremony 09:10 at Kinsei Lounge at Hakata Station Hakata Station (Depart 09:50) Sushi lunch in the train ① Kumamoto Station (Arrive 13:32 / Depart 13:45) Yatsushiro Station (Arrive 14:17 / Depart 14:21) Activity Craft production (On-board) Origuchi Station (Arrive 16:35 / Depart 16:52) Outdoor excursion Walk around Wakimoto coast Ushinohama Station (Arrive 17:11 / Depart 18:24) French cuisine dinner in the train ① Sendai Station (Arrive 19:05 / Depart 19:11) Kagoshima-Chuo Station (Arrive 21:20) Stay the night on the train Overnight stay on the "Seven Stars in Kyushu" Meals <input type="checkbox"/> B <input type="checkbox"/> L <input type="checkbox"/> D
Day 3	Miyazaki Station (Arrive 01:55 / Depart 04:20) Nobeoka Station (Arrive 06:40 / Depart 07:47) Western-style breakfast in the train ① Sotaro Station (Arrive 08:39 / Depart 08:54) Saiki Station (Arrive 09:39) Outdoor excursion Walk around Saiki Saiki Station (Depart 10:42) Japanese-style lunch in the car ① Oita Station (Arrive 12:20 / Depart 13:41) Yufuin Station (Arrive 14:31 / Depart 14:42) Farewell Event Hakata Station (Arrive 17:36) Dismissal upon arrival at Hakata Station Meals <input type="checkbox"/> B <input type="checkbox"/> L <input type="checkbox"/> D
(Additional arrangements)	Arriving in Tokyo Hakata Station 🚗 Fukuoka Airport → (Class J) → Haneda Airport (20:30-22:00)

*Please be aware the itinerary is subject to change.

2-day, 1-night Kyushu Round Trip Course

From the second day (January 31 (Sat)), we will board the "Seven Stars in Kyushu" for the 2-day, 1-night Kyushu round trip course

Key points of the course

- On the first day, a Shinto priest will guide you around Munakata Shrine, a World Heritage Site. After the formal viewing of the shrine, visitors will be admitted to the "Gishikiden" (ceremonial hall), which is usually closed to the public, to view the paintings on the sliding doors. In addition, visitors will be guided through the mysteries of history, art, and national treasures at the Shimpokan, which houses 80,000 national treasures.



Shinto priest

*Guides may be replaced by other Shinto priests.



Fusuma-e (fusuma paintings)



Munakata Shrine

- Lunch on the first day will be a French course with a view of the Japanese garden at a hidden restaurant on the approach to Hakozaikigu Shrine, one of the three major Hachimangu Shrines in Japan.

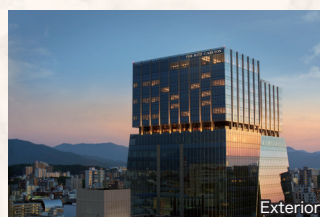


La Saison-Hakozaikigu Shrine (image)

1st night

The Ritz-Carlton, Fukuoka

The Ritz-Carlton, Fukuoka is a sophisticated retreat with views across Hakata Bay, six dining venues that complement the city's renown as a lively food capital, and playful references to the local textile art throughout its spaces. Japanese restaurant Genjyu offers finest "Kaiseki" dinner, each dish painstakingly prepared using carefully selected seasonal produce. Experience the essence of Japanese cuisine through exquisite creations that accentuate the natural flavors of the ingredients.



Exterior



Restaurant (Genjyu)



Dinner (Kaiseki)



Club Lounge



Club Deluxe Double



Deluxe Double Suite

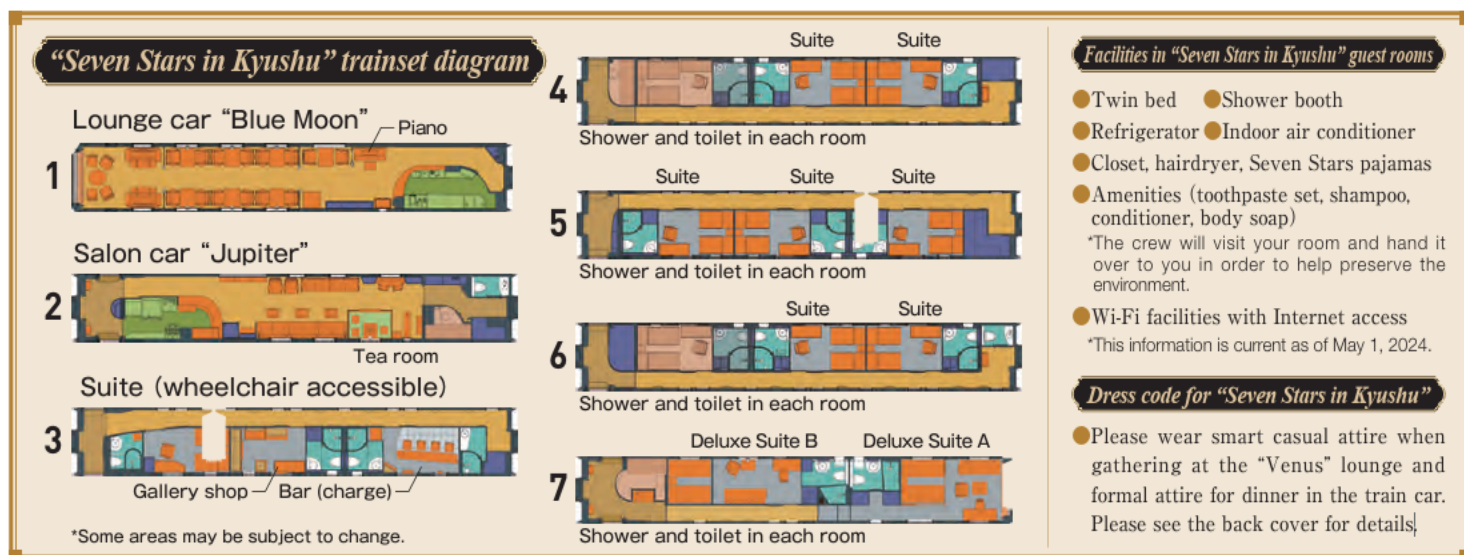
Travel fee (per person, departing from/arriving at Fukuoka Airport or Hakata Station)

Course number MR603-□

1st night The Ritz-Carlton, Fukuoka	2nd night "Seven Stars in Kyushu"	2 guests per room	Branch number	1 guest per room	Branch number
Club Deluxe Double (50m ²)	Suite Room (approx. 10m ²)	1,250,000円	2	1,600,000円	1
Deluxe Double Suite (75m ²)	Deluxe Suite B (approx. 17m ²)	1,500,000円	8	—	—
	Deluxe Suite A (approx. 21m ²)	1,600,000円	9	—	—

- Number of participants: Minimum 16/Maximum 20
- Meals: 2 breakfasts, 3 lunches, 2 dinners
- English-speaking guide: Nationally-licensed and professional English speaking guide will accompany you from Fukuoka Airport on the first day to Fukuoka Airport on the third day.
- Accommodations: [1st night] The Ritz-Carlton, Fukuoka [2nd night] Onboard the "Seven Stars in Kyushu"
- Bus companies: JR Kyushu Bus, Izumi Kanko Bus
- Airline: <From/to Tokyo> JAL (Class J)

*Departing from and arriving in Tokyo, an additional air ticket surcharge of 110,000 yen is required in addition to the prices listed on the left.



"Seven Stars in Kyushu" travel guide

■ **Baggage** ● We offer baggage delivery service for both outward and return trips. 【Domestic delivery only】 Outward (domestic hotel/home ⇒ 1st night hotel) Return/2 times (1st night hotel ⇒ domestic hotel/home and "Seven Stars" ⇒ domestic hotel/home)

■ **Guest rooms** 【Suite guest rooms】 Twin beds (they are foldable and can be used as sofas during daytime hours.). You may not request a specific guest room number or car number. 【Deluxe Suite A】 Enjoy the view from the windows of the train while traveling in the last section of the train. Depending on the train, there may be sections where you cannot see the scenery. ● All cars are non-smoking (including e-cigarettes), and smoking is also prohibited at stations on conventional lines.

■ **Dress code** ● Please wear smart casual attire when gathering at the "Venus" lounge and formal attire for dinner in the train car.
 < Smart casual > (For men) Please wear a jacket, collared shirt, slacks, blazer, etc. (For women) Please wear a dress, collared shirt, jacket, suit, etc.
 < Formal > (For men) Please wear a tuxedo, basic suit, blazer or jacket, necktie, etc. (For women) Please wear a dress, suit, pantsuit, jacket, blouse, skirt, etc.
 ※ We recommend that you wear comfortable clothes and shoes such as sneakers when sightseeing on the outdoor excursion.

■ **Onboard services** 【Complimentary services】 Provision of in-room minibar including welcome drinks, sweets, and afternoon tea
 【Paid services】 Selected vintage wines and champagnes, bar lounge

■ **Other** ● The timetables and sightseeing are subject to change. ● All photos food, sightseeing, etc.) are for illustrative purposes only.

Information and precautions

Legend: ✈ Aircraft 🚌 Bus or taxi 🚶 SevenStars in Kyushu Walk Admissionsightseeing 🍽 Meal 🍳 Breakfast 🍱 Lunch 🍽 Dinner ☐ No meal

■ **Application /** You can participate in this plan from anywhere in Japan by departing from/arriving at Fukuoka Airport/Hakata Station. Please check each schedule for meeting time on the first day and arrival time on the last day. Guests will be responsible for their own transportation to and from the meeting point. Please consult your sales agent for arrangements. A tour conductor will accompany you from the local meeting point to the dismissal point. It is also possible to change the tour to/from Tokyo for an additional fee, but a tour guide will not accompany you.

■ **Change of course content /** ● Schedules are subject to change and events may be cancelled due to transportation and weather conditions. ● Depending on weather conditions, vessels, ropeways, etc. may be closed or the flowers may not be in full bloom. In such cases, the tour will still be conducted and the tour fee will not be refunded. *Guides are subject to change due to their own health or business reasons.

■ **Children's participation /** ● Applications are limited to 13 years and older. The travel fee is the same as for adults



JTB USA, Inc.

1450 Ala Moana Blvd., Ste. 1370, Honolulu, HI 96814

Email: hnl02@jtbusa.com

Website: www.jtbusa.com/honolulu

Inquiries / Reservation



Tel

808-979-0111

Office Hours 9:00 am to 5:00 pm
Monday to Friday / Closed Sat. & Sun.



© JTB USA